



# Care Management PCMH Committee

Person-Centered Medical Home  
Program Update  
November 10, 2021



# PCMH Program Status

## As of October 31, 2021

PCMH Program Participants		Sites		Providers	
9/30/21	10/31/21	9/30/21	10/31/21	9/30/21	10/31/21
<b>126</b>	<b>126</b>	<b>581</b>	<b>579</b>	<b>2,390</b>	<b>2,397</b>

<b>97</b> PCMH Approved Practices  NCQA Sustained Recognition	<b>20</b> Glide Path Practices  Working Towards NCQA Recognition	<b>0</b> Glide Path Renewal Practices  Working towards NCQA Renewal Recognition	<b>16</b> PCMH Accredited Practices  Includes FQHCs
---	---	--	--

Note: 7 Practices have sites in both PCMH & Glide Path Programs

# PCMH Approved Practices

## PCMH Approved Practices

9/30/21

**96**

10/31/21

**97**

New Approved Practices: 0

Completed Glide Path: 1

Termed Practices: 0

## PCMH Approved Sites

9/30/21

**367**

10/31/21

**366**

New Approved Sites: 0

Completed Glide Path: 1

Sites Termed: 2

## PCMH Approved Providers

9/30/21

**1,680**

10/31/21

**1,692**

Completed Glide Path: 6

Providers Added: 11

Providers Termed: 5

# PCMH Adult & Pediatric Practices

**97** PCMH Approved  
Practices

**366**  
PCMH Approved Sites

**39** Internal  
Medicine  
PCMH  
Practices  
with **172** Sites

**21** Family  
Medicine  
PCMH  
Practices  
with **96** Sites

**52** Pediatric  
PCMH  
Practices  
with **97** Sites

**1** Geriatric  
PCMH  
Practice  
with **1** Site

*This data reflects current information through October 31, 2021*

*Note: 6 Practices have sites in 3 of the 4 categories & 4 Practices have sites in 2 of the 4 categories.  
Sites are counted once.*

# PCMH Glide Path Practices

## Glide Path Practices

9/30/21

**21**

10/31/21

**20**

New Practices: 0

Completed Glide Path: 1

Practices Termed: 0

**0**

## Glide Path Renewal Practice

No Change

## Glide Path Sites

9/30/21

**71**

10/31/21

**70**

New Practice Sites: 0

Completed Glide Path: 1

Sites Termed: 0

## Glide Path Providers

9/30/21

**157**

10/31/21

**151**

New Providers: 0

Completed Glide Path: 6

Providers Added: 0

Providers Termed: 0

**0 Sites**

**0 Providers**

No Change

# PCMH Accredited Program Participants

Federally Qualified Health Centers (FQHCs) and FQHC look-alikes are program participants\*

## PCMH Accredited Participants

9/30/21

**16**

10/31/21

**16**

No Change

## PCMH Accredited Sites

9/30/21

**143**

10/31/21

**143**

Sites Added: 0

Sites Termined: 0

## PCMH Accredited Providers

9/30/21

**553**

10/31/21

**554**

Providers Added: 20

Providers Termined: 19

\*Federally Qualified Health Centers (FQHCs) and FQHC look-alikes are PCMH program participants if they are pursuing and/or have obtained the Joint Commission Ambulatory Care accreditation with Primary Care Medical Home certification as well as NCQA recognition.



# PCMH CY2021 Program Recruitment

## Recruitment as of October 31, 2021

- **59 Practice Sites**
  - 29 New Practice Sites
  - 30 New Sites from Current PCMH Practices
- **127 Providers**
  - 76 From New Practice Sites
  - 51 From New Sites from Current PCMH Practices

## Practice Recruitment Opportunities

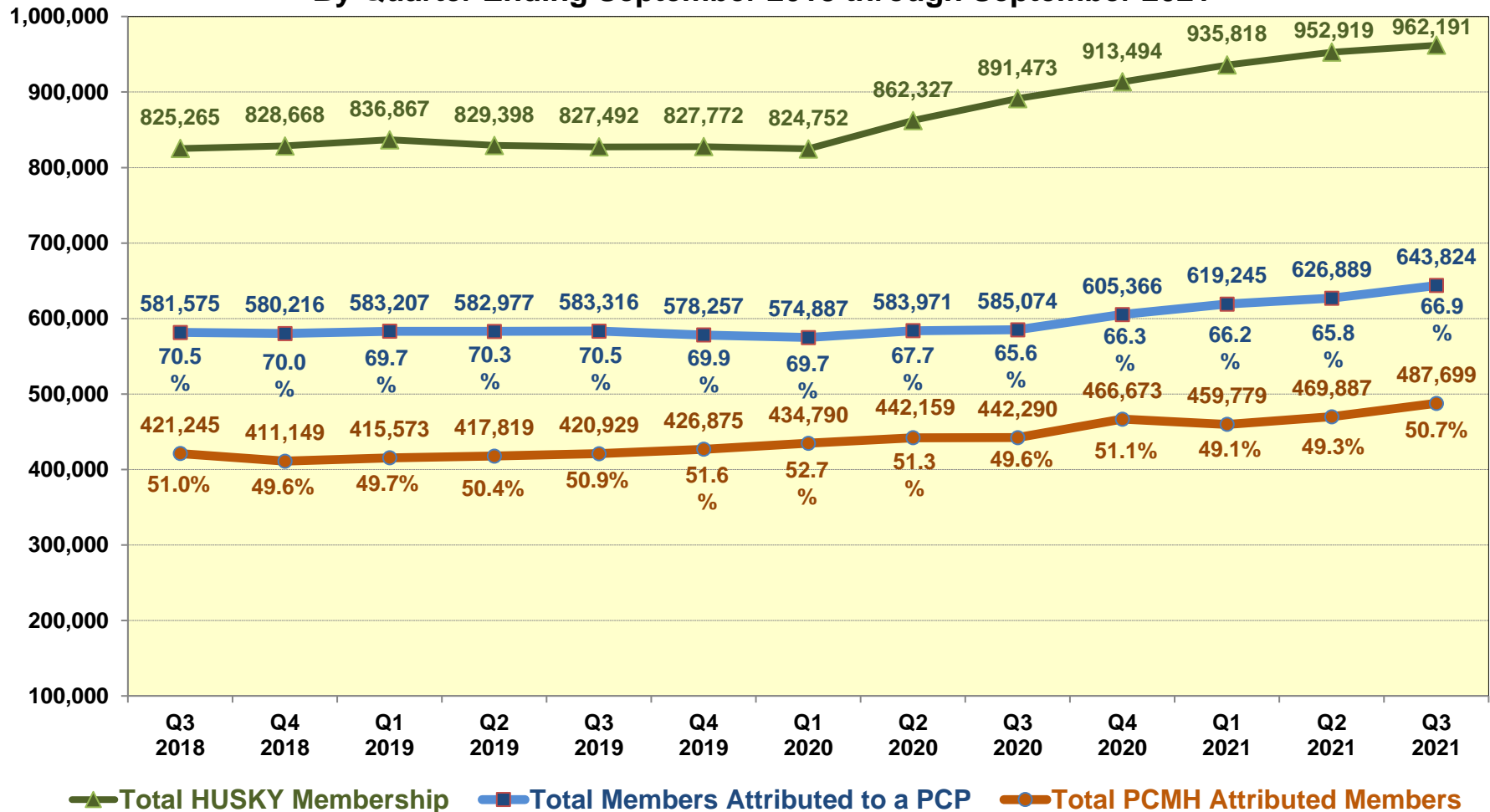
**14 Practice Sites**

**43 Providers**

These are eligible primary care practices that are most likely to enroll in the PCMH program in 2021.

# PCMH Program Member Attribution

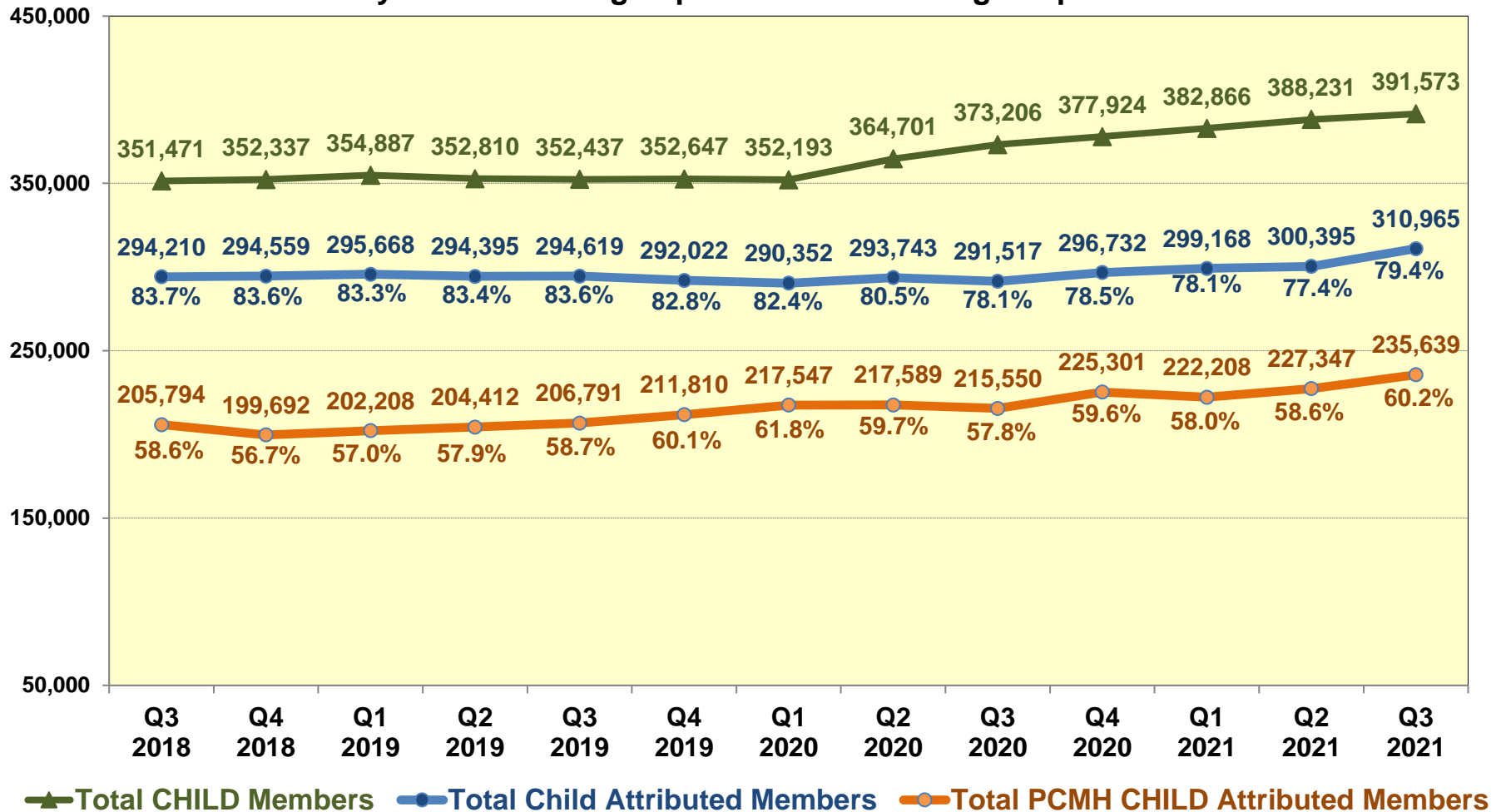
Summary of Total HUSKY Membership, Total Members Attributed to a PCP  
and Total PCMH Attributed Members  
By Quarter Ending September 2018 through September 2021





# PCMH Program CHILD Member Attribution

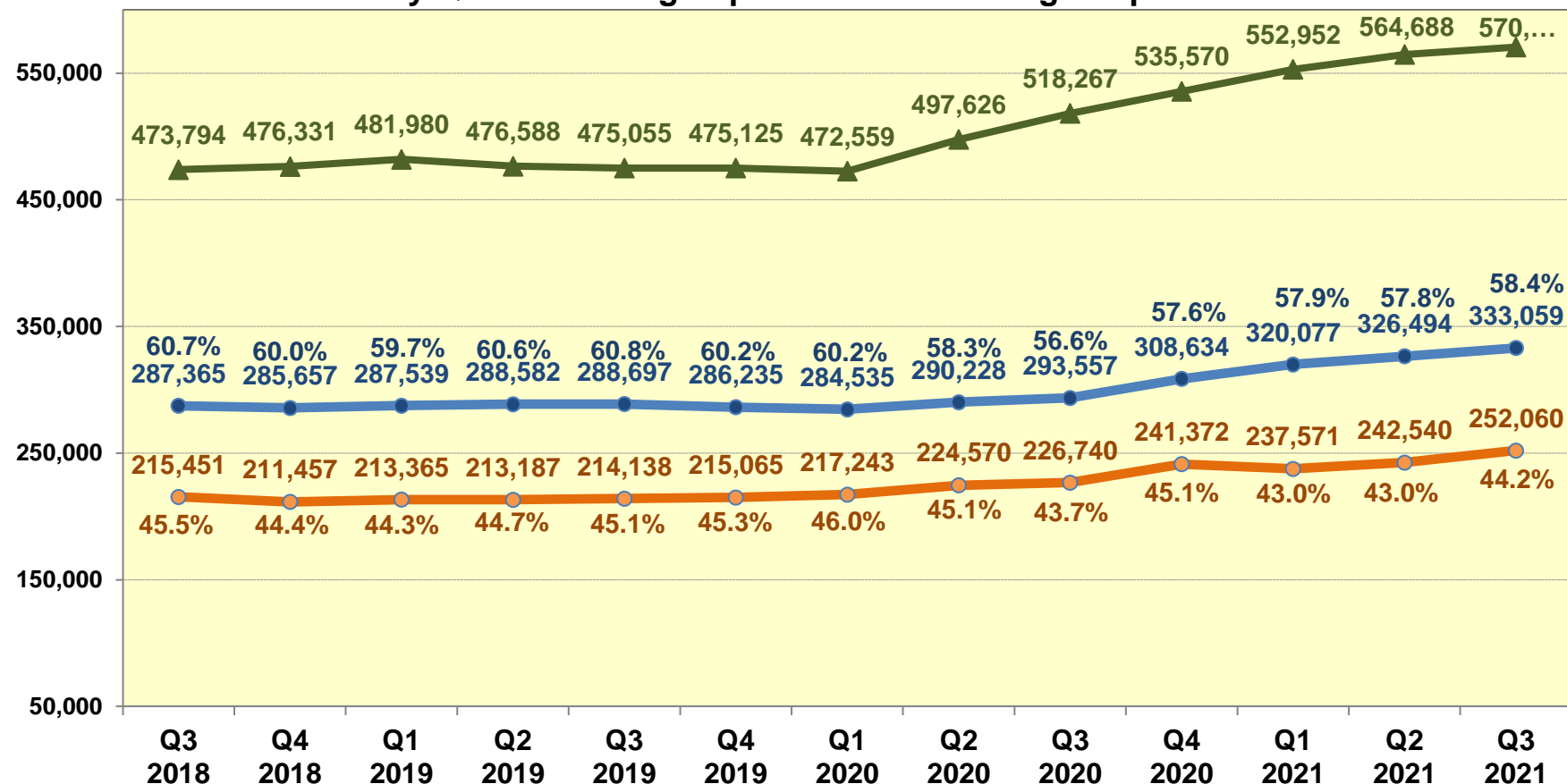
Comparison of Total CHILD Members, Total CHILD Attributed Members,  
and Total PCMH CHILD Attributed Members  
By Quarter Ending September 2018 through September 2021



# PCMH Program ADULT Member Attribution

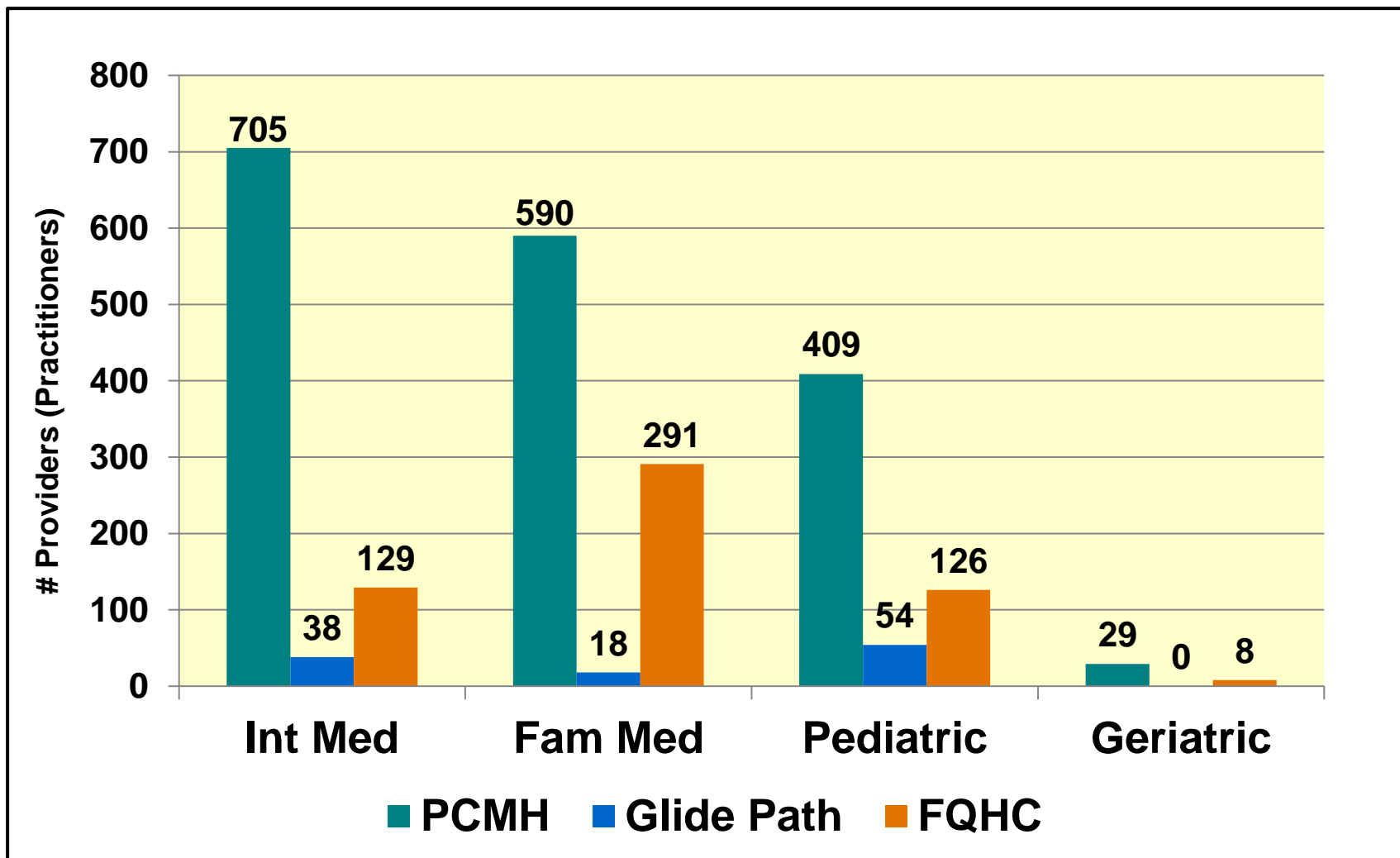
Comparison of Total ADULT Members, Total ADULT Attributed Members,  
and Total PCMH ADULT Attributed Members

By Quarter Ending September 2018 through September 2021

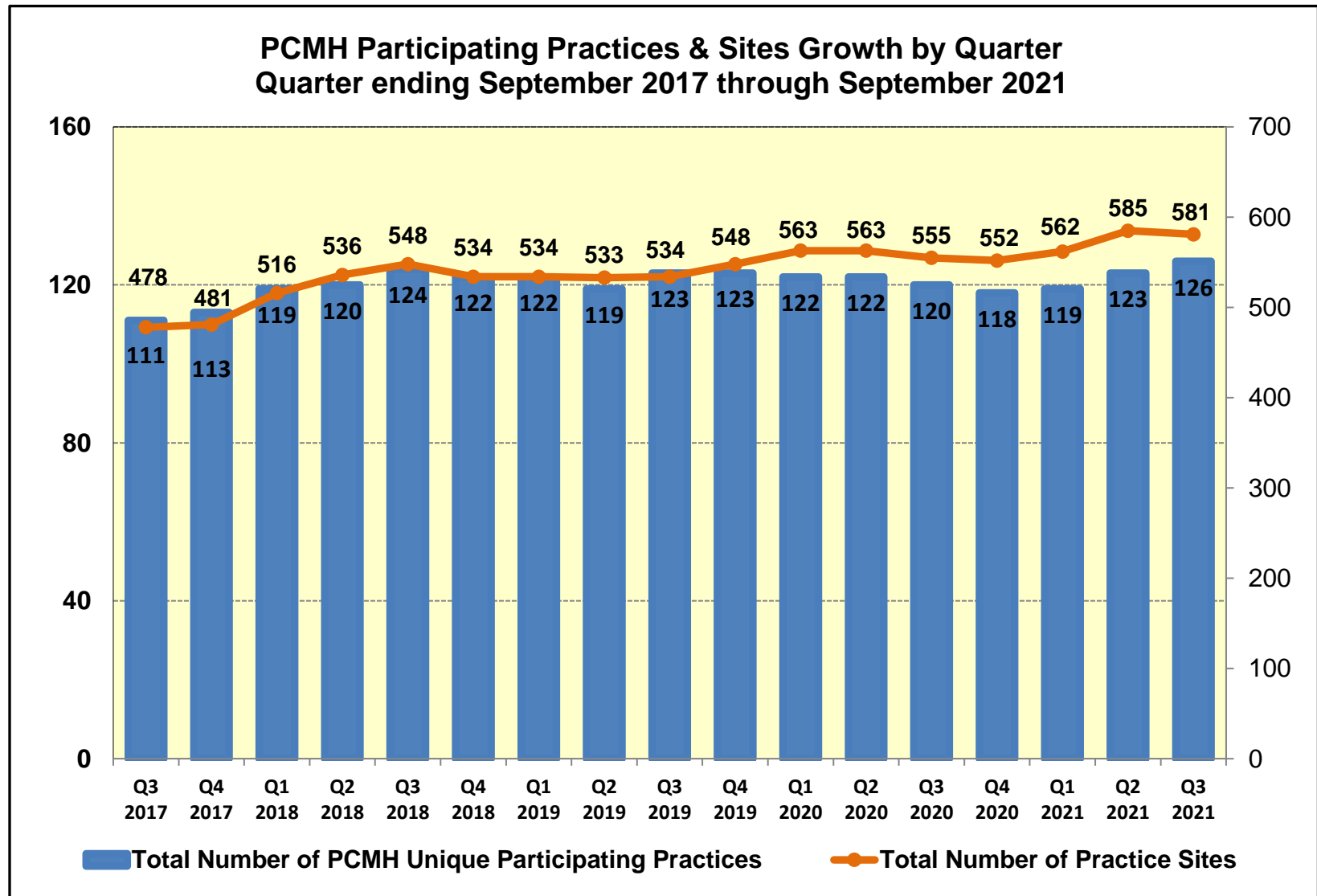


▲ Total ADULT Members    ● Total Adult Attributed Members    ● Total PCMH ADULT Attributed Members

# Provider Specialty by PCMH Program Participation as of October 31, 2021

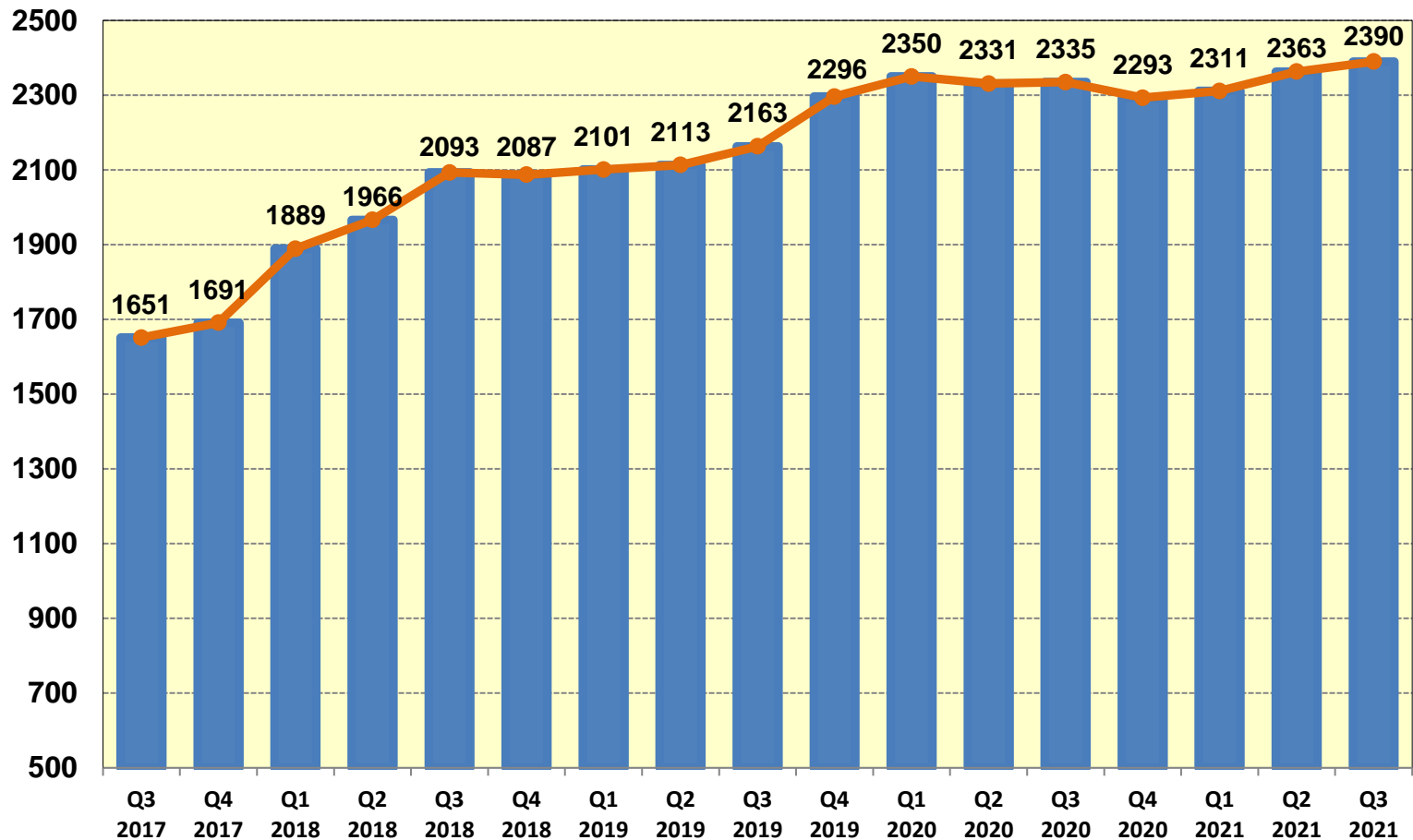


# PCMH Program Growth-Practices & Sites



# PCMH Program Growth - Providers

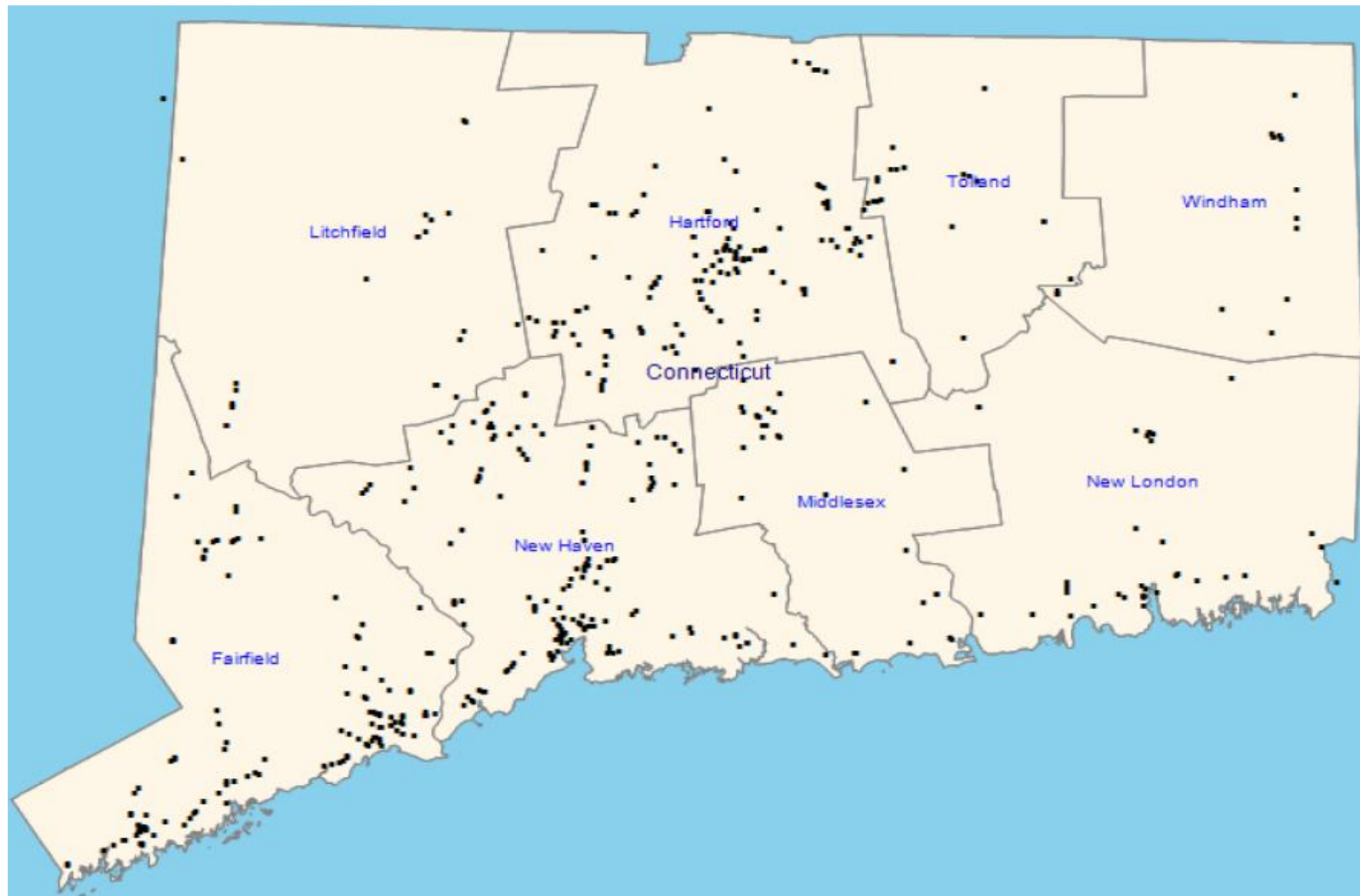
PCMH Total Participating Providers/Practitioners by Quarter  
Quarter ending September 2017 through September 2021





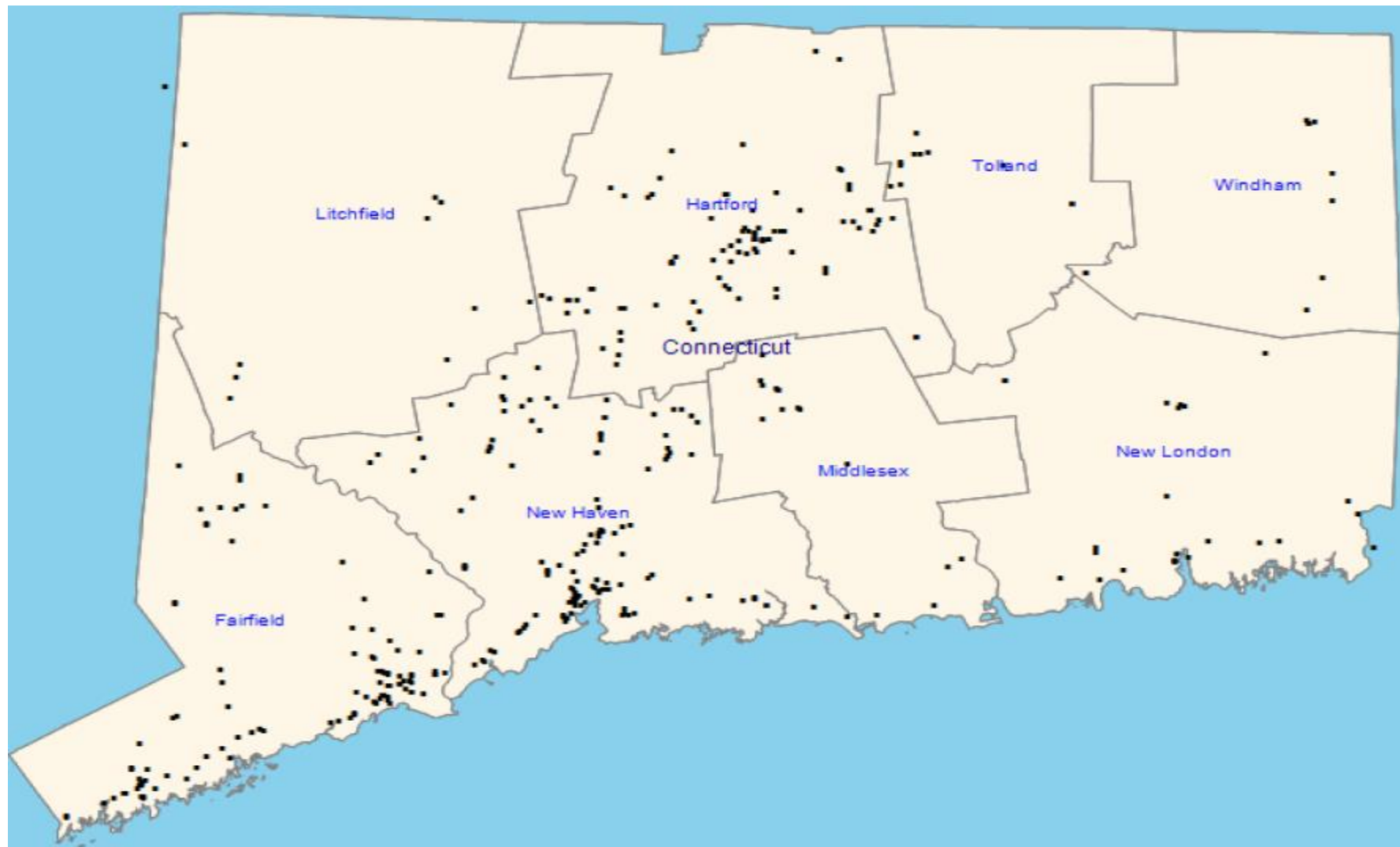
# PCMH Practice Site Locations

# All PCMH Program Practice Site Locations



Note: Data is as of September 30, 2021 – Maps are updated quarterly.

# Internal Medicine PCMH Program Practice Site Locations

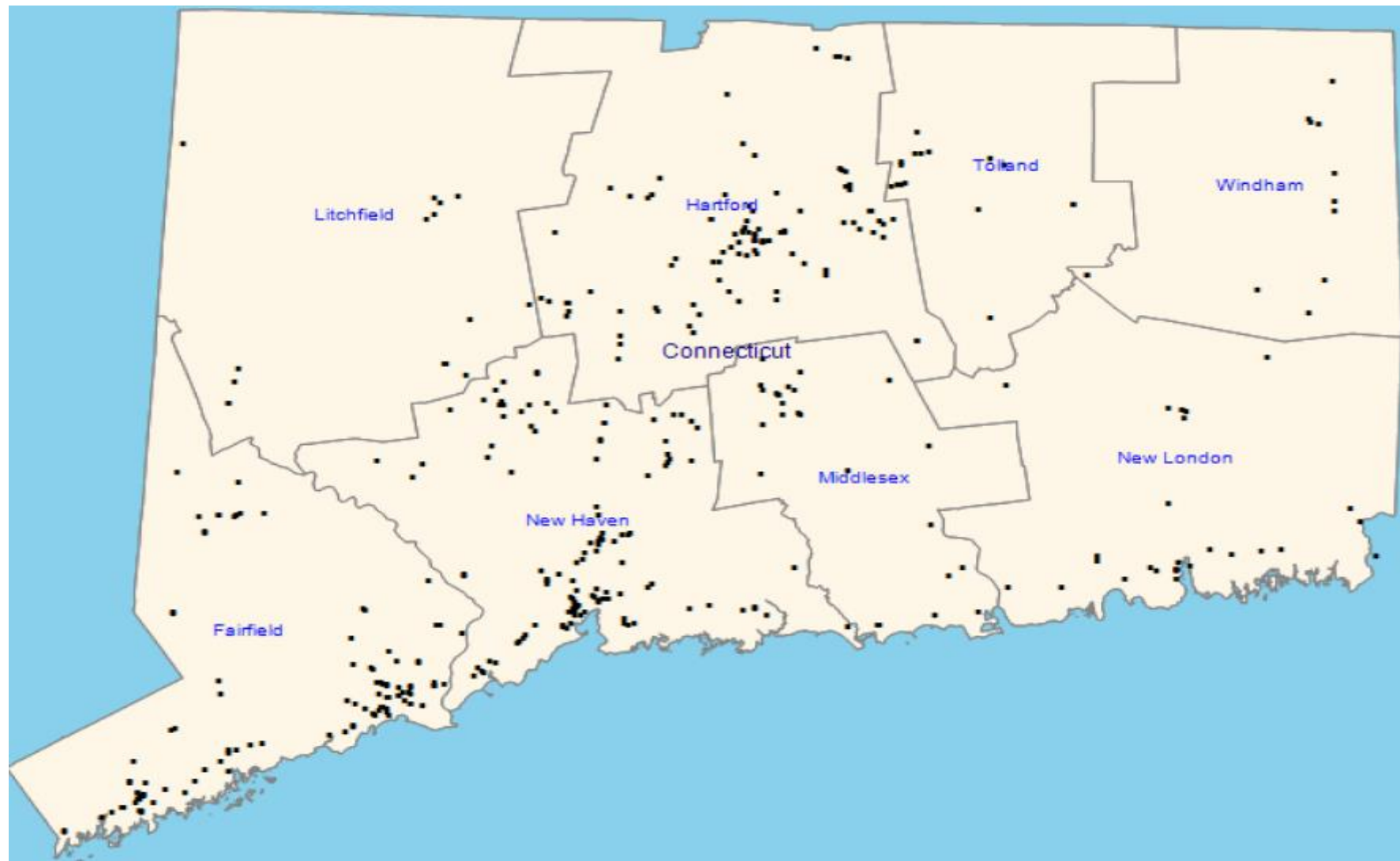


Note: Data is as of September 30, 2021 – Maps are updated quarterly.



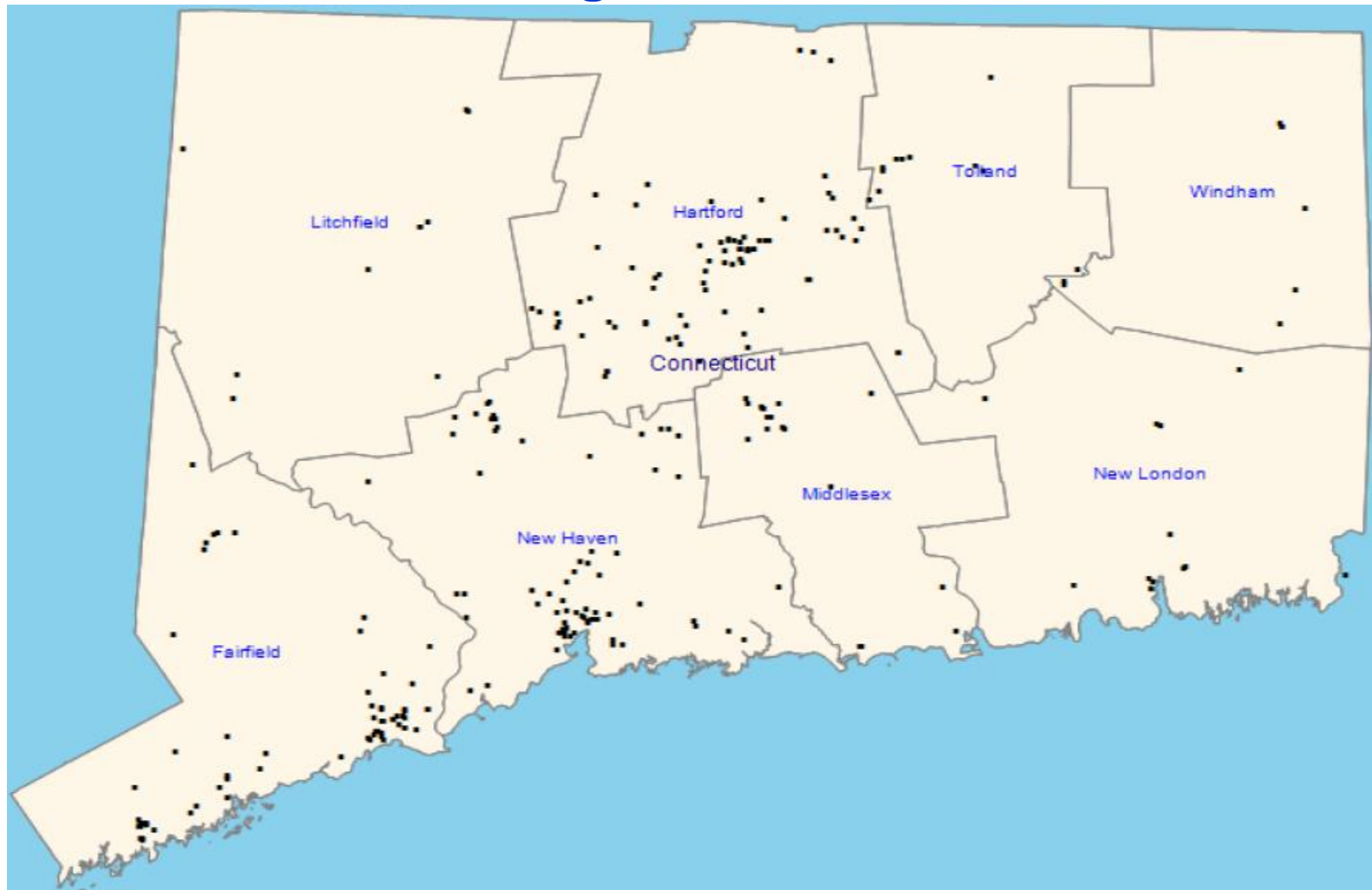
# Family Practice PCMH Program

## Practice Site Locations



Note: Data is as of September 30, 2021 – Maps are updated quarterly.

# Pediatric PCMH Program Practice Site Locations



Note: Data is as of September 30, 2021 – Maps are updated quarterly.